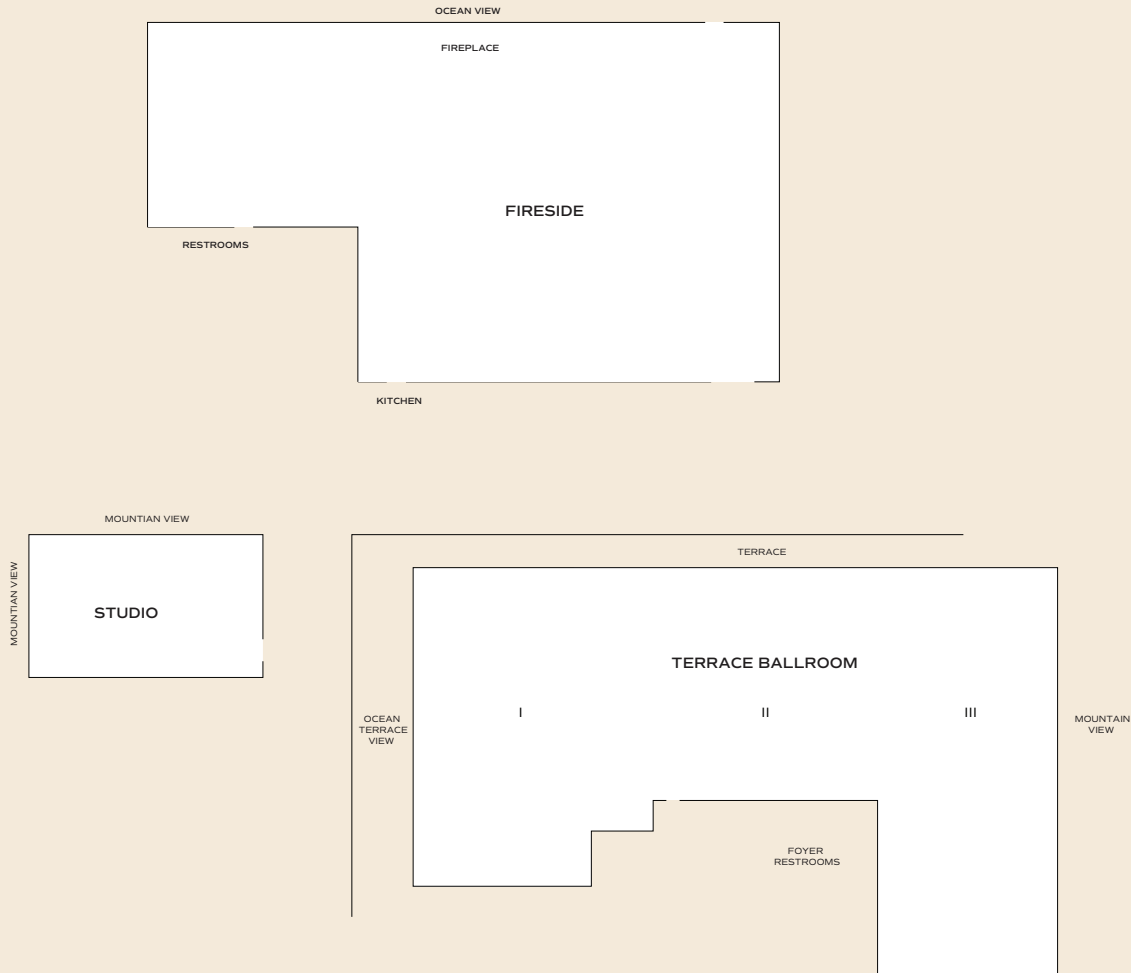
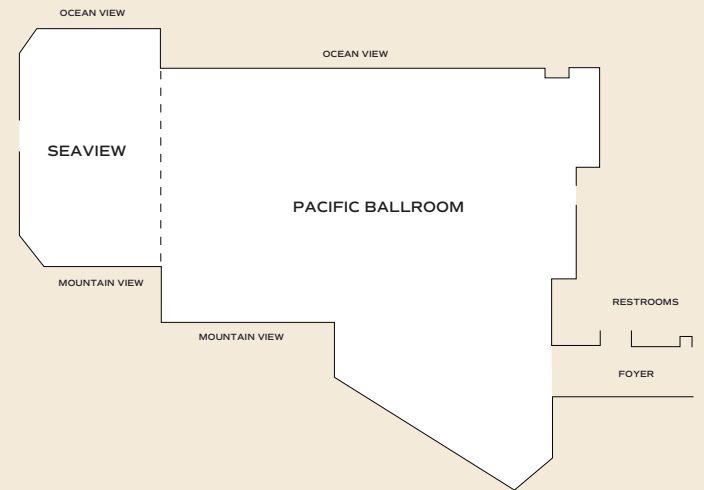


# FLOOR PLANS



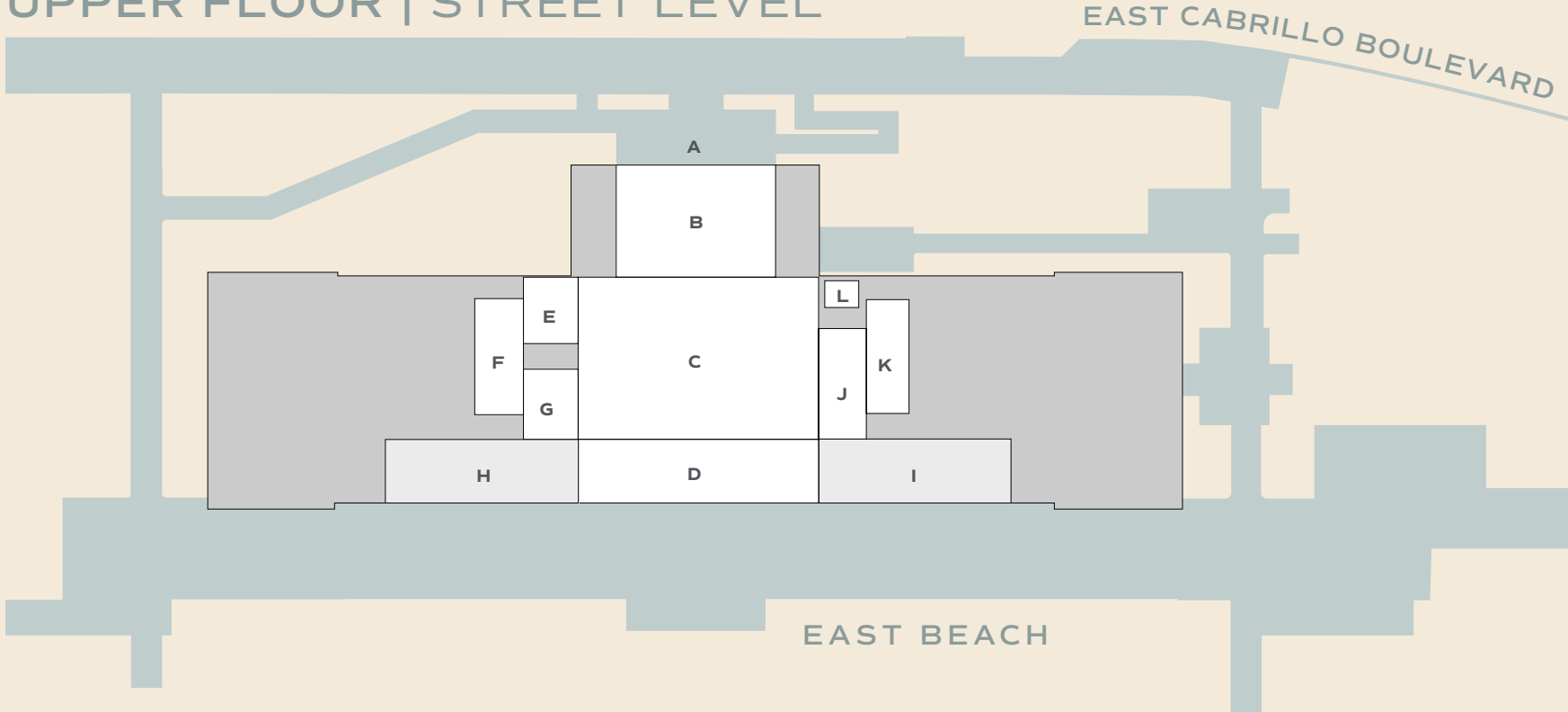
FIRST FLOOR



SECOND FLOOR

# THE CABRILLO PAVILION\*

## UPPER FLOOR | STREET LEVEL



- A Cabrillo Boulevard Entrance
- B Entry Lounge
- C Event Room
- D Enclosed (Indoor) Terrace
- E Restroom
- F Storage
- G Restroom
- H West (Outdoor) Terrace
- I East (Outdoor) Terrace
- J Catering Kitchen
- K Storage
- L Elevator

\*CITY OF SANTA BARBARA AFFILIATED OCEANFRONT MEETINGS & EVENT SPACE

# CAPACITY CHART



ROOM NAME	DIMENSIONS LxWxH	SQFT	BANQUET	RECEPTION	THEATER	CLASSROOM	BOARDROOM	U SHAPE	HOLLOW SQUARE
Pacific Ballroom & Seaview	83'x65'x10'	4325	280	320	300	160	-	-	-
Pacific Ballroom	50'x65'x10'	3800	230	300	280	140	-	50	64
Seaview	33'x18'x10'	525	50	50	50	25	20	20	22
Fireside	60'x40'x11'10"	2000	110	160	150	100	20	50	65
Terrace Ballroom	90'x39'x9'2"	3300	170	250	200	110	-	45	-
Terrace I	24'x39'x9'2"	790	40	80	50	30	20	20	22
Terrace II	32'x26'x9'2"	860	40	50	50	30	20	20	22
Terrace III	50'x34'x9'2"	1650	80	100	120	70	20	40	45
Studio	23'x18'x11'	420	30	30	40	18	20	-	-
Lobby Living Room	50'x18'	870	-	45	-	-	-	-	-
Oceanfront Outdoor Terrace	35'x30'; 10'x18'	1250	-	80	-	-	-	-	-
Living Room & Oceanfront Terrace	-	2120	-	125	-	-	-	-	-
Ocean Lawn	41'x17'	710	40	50	-	-	-	-	-
Cabrillo Arts Pavilion Ballroom*	-	3500	-	216	174	100	-	-	-

\*Santa Barbara city affiliated beachfront meeting and event space located directly on the beach across the street from Mar Monte Hotel.